

An interesting finding of limnephilid caddisfly (Trichoptera, Limnephilidae, Limnephilinae, Limnephilini) on Wrangel Island

Интересная находка лимнефилидного ручейника (Trichoptera, Limnephilidae, Limnephilinae, Limnephilini) на острове Врангеля

T.S. Vshivkova^{*,**}, E.A. Makarchenko^{*,***}
Т.С. Вшивкова^{*,**}, Е.А. Макаренко^{*,***}

* Federal Scientific Center of the East Asia Terrestrial Biodiversity, Far East Branch of the Russian Academy of Sciences, Prosp. 100-letiya Vladivostoka 159, 690022 Vladivostok Russia. E-mail: makarchenko@biosoil.ru.

** Федеральный научный центр биоразнообразия наземной биоты Восточной Азии ДВО РАН, просп. 100-летия Владивостока 159, Владивосток 690022 Россия.

** Institute of the World Ocean, Far Eastern Federal University, Ajax Bay 10, Russky Island, Vladivostok 690922 Russia. E-mail: vshivkova.tse@dvfu.ru

** Институт Мирового океана, Дальневосточный федеральный университет, Бухта Аякс 10, Русский остров, Владивосток 690922 Россия.

*** Far Eastern State Technical Fisheries University, Lugovaya Str. 52b, Vladivostok 690087 Russia. E-mail: makarchenko.ea@dgtru.ru.

*** ФГБОУ ВО «Дальрыбвтуз», ул. Луговая, 52Б, Владивосток, 690087, Россия.

Key words: new records, Trichoptera, Limnephilidae, High Arctic tundra, freshwater ecosystems.

Ключевые слова: новые находки, фауна Trichoptera, Limnephilidae, арктическая тундра, пресноводные экосистемы.

Abstract. The data on the limnephilid caddisfly species from the arctic tundra lake of Wrangel Island are presented. A description of IV instar larva is given, attempts are made to associate the found larvae with one of the related genera of the *Asynarchus-Limnephilus-Philarctus* complex, and it is concluded that the larvae belong to the *Philarctus bergrothi* McLachlan, 1880.

Резюме. Приводятся данные о находке лимнефилидного ручейника из арктического тундрового озера острова Врангеля. Дается описание личинки IV возраста, предприняты попытки ассоциации найденных личинок с родом комплекса *Asynarchus-Limnephilus-Philarctus* и делается заключение о принадлежности личинок к виду *Philarctus bergrothi* McLachlan, 1880.

Introduction

Our knowledge of the aquatic invertebrates of the Russian arctic islands is still insufficient due to the difficulties in reaching these hard-to-reach places, in organizing expeditions and a short season convenient for collecting. Therefore, to date, information about the fauna of freshwater invertebrates, especially amphibiotic insects, is scarce for many groups. However, in regions where protected areas are being created, faunal «white spots» disappear very quickly, thanks to well-organized regular research by reserve staff and attract-ed taxonomists.

The first information about the freshwater invertebrates of Wrangel Island appeared after the organiza-

tion of the «Wrangel Island» State Nature Reserve on March 23, 1976 and subsequent hydrobiological expeditions, which were attended by E.A. Makarchenko in 1978, and then E.A. and M.A. Makarchenko in 1979, researches of the Laboratory of Freshwater Hydrobiology of the Institute of Biology and Soil Sciences FEB RAS, Vladivostok (now Federal Scientific Center of Biodiversity FEB RAS). As a result, a first list of amphibiotic insects was compiled from 35 species [Makarchenko et al., 1980], among which the only one species of caddisfly was listed: *Micrasema gelidum* McLachlan, 1876 based on the materials earlier collected by K. Gorodkov (1 male, imago), without specifying the date and locality.

Then, from 1984 to 1986, collections of terrestrial and aquatic fauna were made by O. A. Khruleva (Severtsov Institute of Ecology and Evolution of the Russian Academy of Sciences, Moscow), who added two limnephilids *Lenarchus expansus* Martynov, 1914 and Limnephilidae gen. sp. collected in the raw willow-sedge-moss community in the lower reaches of the Gusinaya River [Khruleva, 1987].

Since that time, regular studies of the biota on the Wrangel Island have continued, which has significantly enriched knowledge about the aquatic invertebrates of the island. However, Trichoptera findings were extremely rare. Only one more species has added later in the Annals of Nature of the «Wrangel Island» Nature Reserve in 2013: *Limnephilus* sp. In the final species list, which summarized data for all the years of research,

only two species are included: *Micrasema gelidum* and *Limnephilus* sp., while *Lenarchus expansus* is removed from the list.

Recently, A.A. Novichkova (Department of Hydrobiology, Faculty of Biology, Moscow State University) transferred to us three larvae of limnephilid caddisflies collected in the island tundra lake of Tundra of the Academy. Below the description of the larvae is given and the results of attempts to associate them with the genera of the tribe Limnephilini are presented.

Materials and Methods

Three larvae were collected in 2013 during the fieldwork of A.A. Novichkova in the period from June 18 to August 5, 2013 on the territory of the Federal State Budgetary Institution «Wrangel Island State Nature Reserve». She examined 72 water bodies: 23 streams, 2 marshes, 2 brackish lakes and 45 lakes of various sizes and (it is interesting to note) there were only 3 larvae caddisflies revealed among 100 collected samples. This confirms that Trichoptera are extremely rare on the island and represent a very small proportion in the freshwater communities.

For sampling of zoobenthos, scrapers were used, with the help of which the top layer of bottom sediments was sampled, which then was washed through a washing sieve, and obtained invertebrates were fixed with 96% alcohol.

The material is deposited in the Laboratory of Freshwater Hydrobiology Federal Scientific Center of East Asia Terrestrial Biodiversity (Vladivostok) with collection number ICEM-301 and locality code RS001353 (according to East Russia Aquatic Invertebrate Database).

The photographs were taken using an Olympus SZX16 stereomicroscope with an Olympus DP74 digital camera, and then stacked using Helicon Focus software. The final illustrations were post-processed for contrast and brightness using Adobe® Photoshop® software.

Description

The studied larvae are associated with the Limnephilini tribe (subfamily Limnephilinae) based on following characters: (1) location of the antenna approximately midway between the eye and the anterior edge of the head capsule, (2) the prosternal horn is present; (3) chloride epithelia is present, (4) mandibles toothed; (5) mesanotal plates not subdivided; (5) mesanotal setae are reduced in number, (6) primary setal areas are separated, (7) middle and hind femora have only two major setae on ventral edge, (8) setae on dorsal sclerite of segment IX are reduced in number, (9) most abdominal gills of dorsal and ventral series arise in clusters of three filaments according to the definition of the tribe by G.B. Wiggins [1996].

Philarctus bergrothi McLachlan, 1880
Figs 1–12.

Material. Chukotka, Wrangel Island, nameless lake, Tundra of the Academy, N71°21'57.7", W179°51'32.8", 30–32 m a.s.l., 12.VII.2013, stony bottom with large boulders,

water temperature 14 °C, pH 9, Field Sample No. 57.2, leg. A.A. Novichkova — 3 larvae of IV instar.

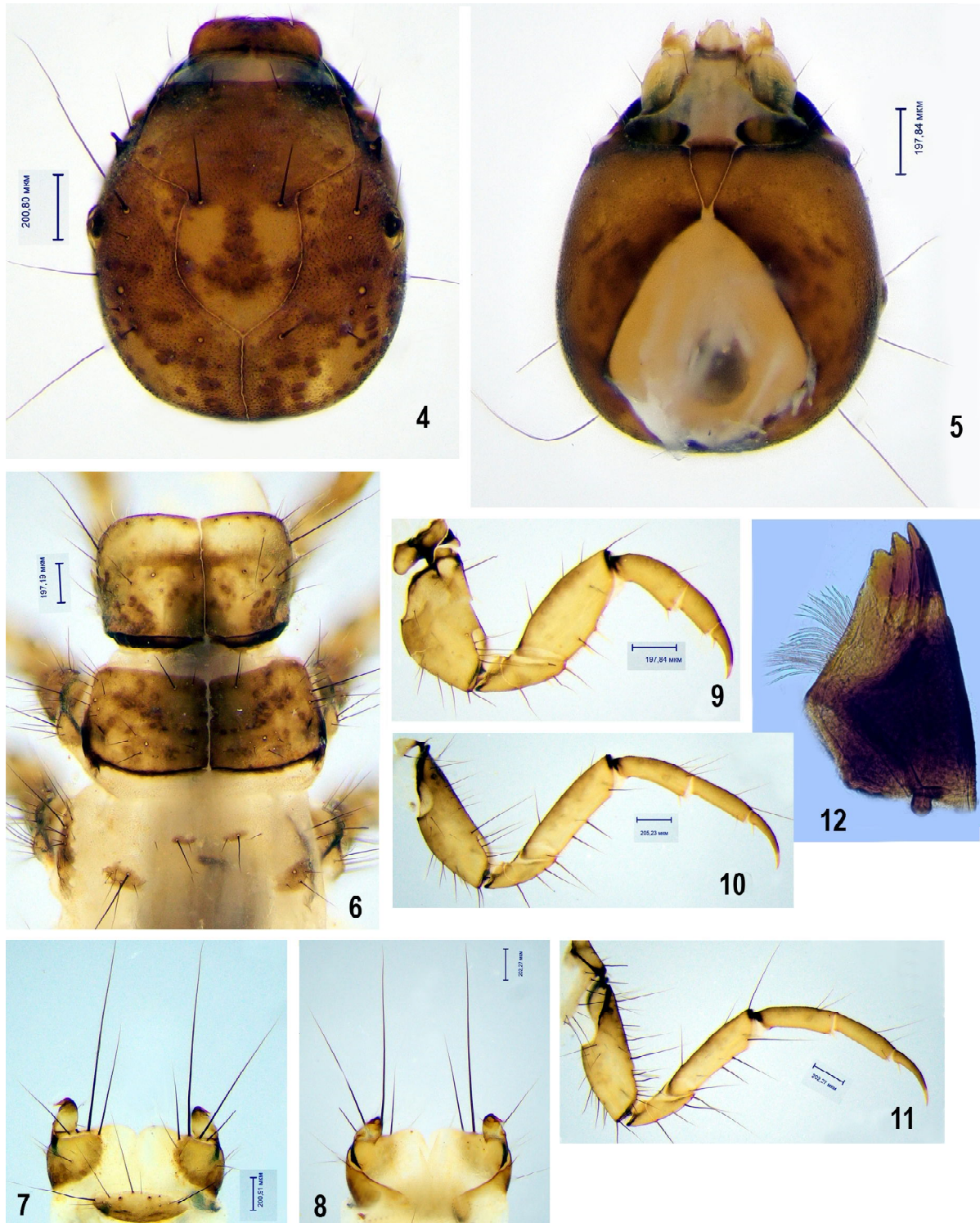
Description. Larva of IV instar. Body length 6.6 mm; case length 6.7 mm (Figs 1–3).

Head. Width 944 mkm (the widest), length 1037.5 mkm (from the frontoclypeal anterior edge to the posterior head capsule edge). Head brown dorsally, with three light blotches in narrow part of frontoclypeus (laterally and posteriorly), that is often occur in *Asynarchus-Limnephilus* (part)-*Philarctus* related genera group of the Limnephilini [Wiggins, 1996], and with darker dots (muscle scars) forming a central anchor-like (T-shaped) figure; the central portion of the «trend anchor» is not light (as in some *Anabolia* and *Asynarchus*) but the same color as lateral dark bands (as in some *Asynarchus* and *Philarctus*); laterally of frontoclypeus there are darker bands protruding from eye area to the mediooccipital portion with scattered dots distributed in parietal and genal areas (Fig. 4) head ventrally brown with darker brown areas along the head occipital margin and with some unclear expressed spots in genal area (Fig. 5). Surface of the head dorsally and ventrolaterally rough, covered with microbeads. Antenna positioned almost 1/2 the distance between anterior edge of parietal and eye. Ventral apotome is single, triangular and extends not reaching 1/7 to the occipital edge (Fig. 5), anterior portion of the ventral apotome 1/3 its total length, and posterior portion 3/4. Cardo plates are oval with length 1/4 shorter than width; length of cardo relatively of ventral apotome almost 1/2 of its total length; cardo with blackish medial edge, dark brown lateral portion, and lighter brown intermedial portion (Fig. 5). Mandible black with blackish-brown distal margin, apical edge with 4 teeth, a brush of light



Figs 1–3. Larva of *Philarctus bergrothi* McLachlan, 1880 (with the aquatic mites attached to the abdomen): 1 — in lateral view (1), 2 — in its case, in lateral view, 3 — in dorsal view.

Рис. 1–3. Личинка *Philarctus bergrothi* McLachlan, 1880 (с водными клещами, прикрепленными к брюшку): 1 — вид сбоку, 2 — в домике, вид сбоку, 3 — вид сверху.



Figs 4–12. Morphology of *Philarctus bergrothi* larva. 4 — head, dorsal view; 5 — the same, ventral view; 6 — thorax, dorsal view; 7 — anal prolegs, dorsal view; 8 — the same, ventral view; 9 — outer view of foreleg; 10 — the same of midleg; 11 — the same of hind leg; 12 — left mandible, ventral view.

Рис. 4–12. Морфология личинки *Philarctus bergrothi*. 4 — головная капсула, вид сверху; 5 — то же, вид снизу; 6 — грудь, вид сверху; 7 — анальные ножки, вид сверху; 8 — вид снизу; 9 — наружная поверхность передней ноги; 10 — то же, средней ноги; 11 — то же, задней ноги; 12 — левая мандибула, вид снизу.

brown-yellow setae on ventral edge (Fig. 12), and 2 black setae on lateral edge. Labrum with a deep oval incision on anteromedial margin, the width of the incision at least 1/6 of total labrum width; with a pair of short pale brown setae at anterolateral margin (setae #2), another pale brown pair setae on anterior edge laterally the incision (setae #1), a pair pale brown setae posteriorly the incision (#4), and a transverse row of 3 pairs of brown to black setae at half the distance between anterior and posterior edges (setae #3, 5 and 6) (numbering of setae according S.G. Lepneva [1966]).

Thorax. Pronotum brown, a transverse furrow separates the anterior 1/3 from a posterior 2/3 (Fig. 6); anterior part almost unicolourous light yellowish-brown, dark brown dots in blotches or bands occur on posterior 2/3; setation on pronotum in 2 transverse rows; about 15 setae from each side in anterior part of pronotum: a pair of black and very long (longest on pronotum) conspicuous setae positioned at anterior edge of each half of pronotum, about 3 pair of medium sized black setae at the pronotum anterior edge, other setae are smaller black or yellow; on posterior part there is 1 very long seta on each side close to the ecdysial suture, and on lateral edge 1 more long seta and about 6–7 smaller ones; prosternal horn long and slender, extended ventrally to distal edge of head capsule; mesonotum (Fig. 6) brown darker blotches or bands of dots; following the G.B. Wiggins terminology [Wiggins, 1996] *sa 1* has 2 setae (posterior setae longer than anterior in 3.5 times), *sa 2* 5, and *sa 3* 8–12 setae; metanotum (Fig. 6) with 3 pairs of sclerotized plates with setae, the number of setae on *sa 1* is 2 (plus 1 inconspicuous seta laterally of *sa 1* sclerite), on *sa 2* 5–6, and on *sa 3* 10 setae.

Legs. First pair of legs shortest, second and third pairs about equal in length (Figs 9–11). First coxa outer surface anteriorly with 1 long black, and 6 short ones, posteriorly with 2 long and 1 shorter setae; ventral and inner surface with 10–12 setae scattered on the coxa surface, and with 2 setae at distal edge. Trochanter divided in 2 parts: basal and distal portions, with no setae on inner part; 3 black setae at, or close to, lateral edge on outer part of trochanter; 1 short seta close to distal edge trochanter, and a brush of yellow microsetae distoventrally. Femur, on its ventral portion with 2 yellow setae and a row (comb) of small microsetae, 4 black setae dorsally, 1 seta posteriorly on outer face; and 4 setae on dorsal edge. Tibia almost twice shorter than femur, with a row of small microsetae (comb) on part of ventral edge; distally 2 yellow tibial spurs, and 1 pale, 2 black setae dorsally. Tarsus with 2 rows of yellow setae on the entire length of ventral side; distally 2 small pale setae ventrally and 1 black dorsally; basal seta on tarsal claw shorter than the claws on all 3 pairs of legs. Second pair of legs with 2 long and 5 shorter black setae on distal edge of coxa (towards trochanter), on outer half of dorsal and anterolateral area are 14–15 black setae, and a variable number on dorsal edge towards trochanter; inner trochanter without setae; basal portion of trochanter with 1 black seta on the edge; distal portion of trochanter with 4–5 black setae scattered ventrally and with 2 yellow setae distally on ventral edge, a little brush of small yellow setae distally on ventral edge; femur with a row of small yellow setae (comb) along the entire length of its ventral face, the comb curving to dorsal side distally; 4 small accessory setae on the inner (anterior) surface, 3 on the dorsal edge, and 1 long seta distally; 3 on the ventral edge. Tibia with a row of small yellow setae on outer 2/3 of ventral edge; distally 2 yellow tibial spurs on ventral edge, 1 anterolateral and 4 black setae dorsally. Tarsus with a row of small setae; distally 1 dorsal long black seta. Third pair of legs have 16–

Table 1. Gill position of IV larval instar of *Philarctus bergrothi*

Таблица 1. Расположение жабр у личинки IV возраста *Philarctus bergrothi*

Abdominal segments	Dorsal	Lateral		Ventral
2	2 3	2	2	2 3
3	3 3	2	2	2 3
4	3 1	1		2 2
5	1 1			2 2
6				1 1

18 black setae on dorsal portion of coxa and 18 setae scattered on ventral portion. No setae on central area of inner trochanter. On outer trochanter 6 black and 1 yellow setae on ventral edge. Femur with a row of small, yellow setae on ventral edge; distally the row curves to dorsal side on anterolateral face; with 4 black dorsal setae and 3 ventral, outer (posterior) surface with 2 small accessory setae, inner (anterior) surface with 2–3 small setae. Tibia with a row of small yellow setae on ventral edge; distally, 2 yellow tibial spurs ventrally, and 4 black setae dorsally. Tarsus with a row of small, yellow setae on ventral edge; distally 2 dorsal and 2 ventrolateral setae. Basal seta on claw much shorter than claw.

Abdomen. Dorsal and lateral humps present on segment I, dorsally 3 setae in *sa 1* position, 3 *sa 2*, and 3 at *sa 3* (at lateral humps); on ventral side 6 setae at *sa 1* position; the *sa 2* on each half are fused together and contain 3 setae, and at base of each upper seta surrounded with light brown circle; *sa 3* includes 3 setae dorsally of hump and 2 setae ventrally on hump; the microsculpture of the lateral hump surface is tiny beaded.

Dorsally segments II–VII with a pair mediolateral long thin black setae, and a pair short lateral setae. Gills present on abdominal segments II–VI. Numbers of single gill filaments and their position are given in Tabl. 1. Lateral fringe present on segments III–VIII. Lateral tubercles present on segments III–VIII. Chloride epithelia present ventrally as wide and long plates occupying almost all ventral portion of segments; dorsally and laterally absent. Posteriorly and dorsally on segment VIII a transverse band of setae with 4 present on each side of longitudinal centre line of abdomen, 4 setae ventrally (Fig. 8). Dorsal sclerite (Fig. 7) on segment IX with 4 major setae and 8 smaller setae in between, and with 4 setae (2 short and 2 longer) between central major setae. Lateral sclerites of anal prolegs bear 4 long setae each at the distal edge, 5 short setae scattered on dorsal portion of each lateral sclerite; one short seta laterally at the base of each ventral sole plate; each sole plates with 1 seta; anal claw with 3 black setae dorsally, and 2 yellow setae ventrolaterally; each claw with 1 accessory hook.

Case. Length 6.8 mm, straight, round in cross section, made of plant pieces connected by a silk secret (Fig. 2).

Discussion

Wrangel Island is located on 71 °N off the coast of northeastern Eurasia, it is bounded by the Arctic Ocean, the East Siberian Sea and the Chukchi Sea. Its total area is about 7 600 km². The dominating landscape is Arctic

tundra. It is included in a Zone B of the Circumpolar Arctic Region Bioclimatic Zones, which is characterized by the average July temperature 3–5 °C [Walker et al., 2002]. There are many lakes, ponds and swamps, especially in the north-eastern part the western part are mountainous with numerous streams and rivers. The aquatic ecosystems are home to many aquatic invertebrates; however, caddisflies are extremely rare. The severe conditions of survival were a natural boundary for the penetration of species not adapted to life in the High Arctic environment; also, the island position played a role of natural boundaries. Nevertheless, several tens of aquatic invertebrates (especially dipterans of Chironomidae) have recorded on the island, with a few very rare caddisflies belonging to two families: Brachycentridae and Limnephilidae.

The family Limnephilidae is widely distributed in northern latitudes and therefore named Northern Case-maker Caddisflies. The genera of tribe Limnephilini to which definitely belong the larvae are shredders; they use plant material, in some cases rocks, for case building and inhabit lentic habitats [Wiggins, 1996].

The identification of many limnephilid larvae is difficult, especially of a tribe Limnephilini. These difficulties caused the lack of descriptions of larval stages of many species, the uncertainty of the diagnosis of genera of the Limnephilini tribe, especially *Limnephilus*, which is considered polytypical and includes a number of species that apparently do not belong to it [Vshivkova, 2003; Vshivkova et al., 2007]. There are some keys adapted to the fauna of large regions or local faunas that allow the basic differentiation of limnephilid larvae to genera or species [Hiley, 1976; Wiggins, 1996; Ivanov et al., 2001; Wallace et al., 2003; Ruiter et al., 2013, Waringer, Graf, 2013; Rinne, Wiberg-Larsen, 2017, and others]. However, the general reliable key to larvae, which includes all the world genera of Limnephilidae, is absent, that often limits the definition of immature stages.

The head pattern of limnephilid larvae is often used as an important diagnostic feature. The head pattern of larvae we studied are similar to the heads of genera *Anabolia*, *Asynarchus*, *Limnephilus* (part), *Philarctus*, and *Clistoronia*, and can help to distinguish this complex closely related genera. However, as G.B. Wiggins [1996] pointed out, this character working not well to separate the larvae of the mentioned genera. We have made attempts to link the studied larvae with the genera of the specified complex, gradually excluding genera with obviously unsuitable characters. We excluded *Clistoronia* by the character of presence of accessory setae on the mesofemur lateral surfaces (they lacking in *Clistoronia*). *Anabolia* and *Asynarchus* were excluded by the character of lacking in studied larvae of dorsal chloride epithelia (present in both noted genera). They can be separated from true *Limnephilus* (s.str.) based on possessing in studied larvae the mesofemur accessory setae (absent in true *Limnephilus*) which similarly present in *Philarctus*; and by the presence of accessory setae on the basal

mesotrochanter segment (absent in true *Limnephilus*), but similarly present in *Philarctus*. Thus, the studied larvae could be associated with *Philarctus* or some «*Limnephilus*» *sensu lato* for which larvae are not known. In *Philarctus*, as noted G.B. Wiggins [1963, 1996], the case is often constructed of mollusks, although, immature specimens may use small vegetation pieces, switching to mineral or other material prior to pupation [Ruiter et al., 2013]. The body of the studied larvae is completely made of pieces of plants connected by a silk secret. We must take into account that the case of a larva V instar may differ from the case of the previous stage. Also, it should be borne in mind that on Wrangel Island freshwater mollusks are practically absent [Vinarski et al., 2015].

Comparison of our IV instar larvae with the description of *Ph. bergrothi* of V instar larva made by W. Mey [1982] (larvae collected in Mongolia, Bajan-Ölgij Aimal: 49°N, 89°E, 15.VII.1975), in general, coincide. The difference is noted in the number of gill filaments on the abdominal segments, which, however, may be due to the younger age of the larvae from Wrangel Island.

This species has been recorded in areas north of the Arctic Circle (runs 66°33'49" north of the Equator). It was recently observed also at latitude 69° N, on the island of Vaigach, Khalamerto Lake (collected in the shallow lake with silty-sand and gravel bottom substrates vegetated by mosses and higher macrophytes; the average depth of sampling was 0.28 ± 0.17 m) [Bespalaya et al., 2021]. The *Ph. bergrothi* (= *Ph. quaerius* (Milne, 1935) [Morse, 2009] is widely distributed in East Palearctic and Nearctic [Levanidova et al., 1995; Wiggins, 1963; Wiggins, Parker 1997; Ivanov, 2011; Rinella et al., 2012; Kendrick, Huryn, 2014; Zasyapkina, 2016; Morse, 2009, and others]. In the Western Palearctic, the species is limited in the continental part of temperate latitudes [Malicky, 2005], and recently recorded on the arctic island of the West Russia [Bespalaya et al., 2021]. Thus, the findings of *Ph. bergrothi* from Wrangel Island are obviously the northernmost finds of this species.

Acknowledgements

The authors are sincerely grateful to A.A. Novichkova (Department of Hydrobiology, Faculty of Biology, Moscow State University) for the opportunity to study rare caddisfly material she collected at the Wrangel Island and Dr. V.M. Loktionov (Federal Scientific Center of the East Asia Terrestrial Biodiversity, Vladivostok) for help with preparing microphotographs.

The research was carried out within the state assignment of Ministry of Science and Higher Education of the Russian Federation (theme No. 121031000147-6).

References

- Bespalaya Y., Przhiboro F., Aksenova O., Berezina N., Gofarov M., Kondakov A., Kurashov E., Litvinchuk L., Sokolova S., Spitsyn V., Shevchenko A., Tsiplenkina I.,

- Travina O., Tomilova A. 2021. Preliminary study of the benthic fauna in lakes of the Novaya Zemlya Archipelago and Vaigach Island (the Russian Arctic) // *Polar Biology*. Vol.44. P.539–557.
- Hiley P.D. 1976. The identification of British limnephilid larvae (Trichoptera) // *Syst. Entomol.* Vol. 1. P.147–167.
- Ivanov V.D., Grigorenko V.N., Arefina T.I. 2001. Trichoptera. // Tsalolikhin S.Y. (Ed.): Key to Freshwater invertebrates of Russia and adjacent lands. SPb. Vol.5. P.7–73. [In Russian].
- Ivanov V.D. 2011. Caddisflies of Russia: Fauna and biodiversity // *Zoosymposia*. Vol.5. P.171–209.
- Kendrick M.R., Huryn A.D. 2014. The Plecoptera and Trichoptera of the Arctic North Slope of Alaska // *Western North American Naturalist*. Vol.74. No.3. P.275–285.
- Khruleva O.A. 1987. Invertebrate animals. Flora and fauna of the USSR Nature Reserves. Fauna of the «Wrangel Island» Nature Reserve. Ed. E.V. Sokolov. M. P.6–36. [In Russian]
- Lepneva S.G. 1966. Fauna of the USSR, Trichoptera II (2). Larvae and pupae of the Integripalpia. Ed. B.E. Bykhovskiy. Zoological Institute of the Academy of Science of the USSR, New Series. Vol.95. 562 p. [In Russian].
- Levanidova I.M., Vshivkova T.S., Arefina T.I., Zasyapkina I.A. 1995. A tabular check-list of caddisflies (Insecta: Trichoptera) of the Russian Far East // *Far Eastern Entomologist*. No.16. P.1–19.
- Makarchenko E.A., Levanidova I.M., Zhiltzova L.A. 1980. Preliminary data on fauna of water invertebrates of the Wrangel Island // *Freshwater fauna of the Far East*. Vladivostok, DVNC AN SSSR. P.3–12. [In Russian].
- Malicky H. 2005. Ein kommentiertes Verzeichnis der Köcherfliegen (Trichoptera) Europas und des Mediterrangebietes // *Linzer biol Beitr.* Vol.37. No.1. P.533–596.
- Mey W. 1982. Die Larve von *Philarctus bergrothi* McLachlan (Trichoptera, Limnephilidae) // *Reichenbachia*. Bd.20, No.25. P.197–201.
- Morse J.C. (Ed.) 2009. Trichoptera World Checklist. Available from <http://entweb.clemson.edu/database/trichopt/search.htm> (accessed 20 June 2022).
- Rinne A., Wiberg-Larsen P. 2017. Trichoptera Larvae of Finland. A Key to the Caddis Larvae of Finland and Nearby Countries. Trificon, Finland. 151 p.
- Rinella D.J., Bogan D.L., Shaftel R.S., Merrigan D. 2012. New aquatic insect (Ephemeroptera, Trichoptera, and Plecoptera) records for Alaska, U.S.A.: range extensions and a comment on under-sampled habitats // *THE Pan-Pacific Entomologist*. Vol.88. No.4. P.407–412.
- Ruiter D.E., Boyle E.E., Zhou X. 2013. DNA barcoding facilitates associations and diagnoses for Trichoptera larvae of the Churchill (Manitoba, Canada) area // *BMC Ecology*. Vol.13, No.5. DOI: 10.1186/1472-6785-13-5.
- Vinarski M.V., Palatov D.M., Novichkova A.A. 2015. The first freshwater molluscs from Wrangel Island, Arctic Russia // *Polar Research*. Vol.34. 23889, <http://dx.doi.org/10.3402/polar.v34.23889>.
- Vshivkova T.S. 2006. Phylogeny of family Limnephilidae (Insecta: Trichoptera) with emphasis on tribe Limnephilini (Subfamily Limnephilinae). Ph.D. Thesis. Clemson University. 686 p. All Dissertations. 44 https://tigerprints.clemson.edu/all_dissertations/44.
- Vshivkova T.S., Morse J.C., Ruiter D. 2007. Phylogeny of Limnephilidae and composition of the genus *Limnephilus* (Limnephilidae // *Proceedings of the 12th International Symposium on Trichoptera*. Bueno-Soria J., Barba-Álvarez R., Armitage B.J., Columbus OH (Eds): The Caddis Press. P.309–319.
- Walker D.A., Gould W.A., Maier H.A. Reynolds M. K. 2002. The Circumpolar Arctic Vegetation Map: AVHRR-derived base maps, environmental controls, and integrated mapping procedures int. j. remote sensing. Vol.23, No.21. P.4551–4570.
- Wallace I.D., Wallace B., Philipson G.N. 2003. Keys to the case-bearing caddis larvae of Britain and Ireland // *Freshwater Biological Association Scientific Publication*. Vol.61. 259 p.
- Waringer J., Graf W. 2013. Key and bibliography of the genera of European Trichoptera larvae // *Zootaxa*. Vol.3640, No.2. P.101–151.
- Wiggins G.B. 1963. Larvae and pupae of two North American limnephilid caddisfly genera (Trichoptera: Limnephilidae) // *Bulletin of the Brooklyn Entomological Society*. Vol.58, No.4. P.103–112.
- Wiggins G.B. 1996. Larvae of the North American caddisfly genera (Trichoptera). 2nd edition. Toronto, ON: University of Toronto Press. 457 p.
- Wiggins G.B., Parker C.P. 1997. Caddisflies (Trichoptera) of the Yukon, with Analysis of the Beringian and Holarctic Species of North America p. 787–866 // H.V. Danks, J.A. Downes (Eds): *Insects of the Yukon*. Biological Survey of Canada (Terrestrial Arthropods), Ottawa. 1034 pp.
- Zasyapkina I.A. 2016. Current knowledge on caddisflies (Trichoptera) in northern Far East Russia // *Zoosymposia*. No.10. P.480–492.

Поступила в редакцию 26.6.2022